

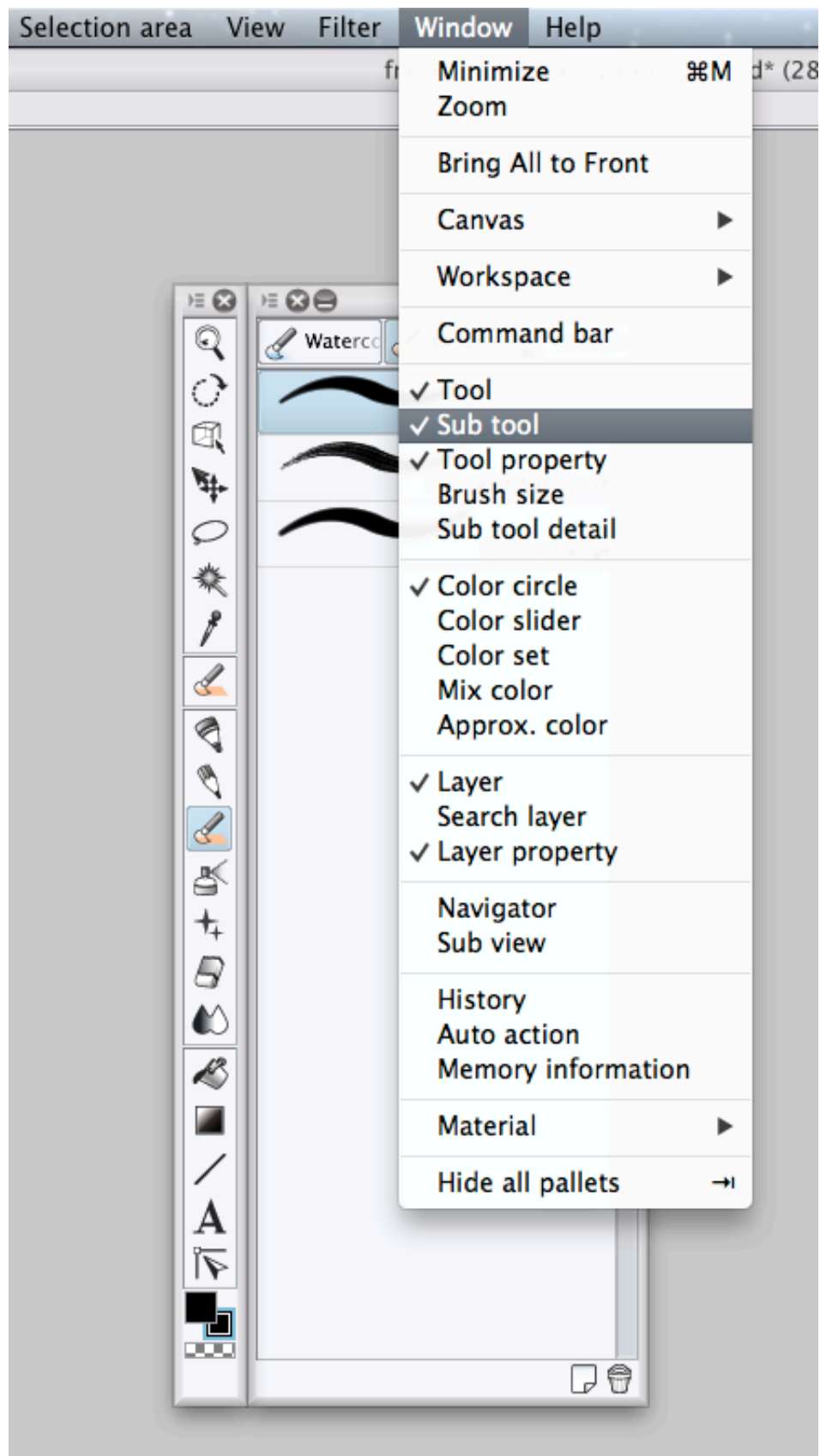
THE CARE AND FEEDING OF YOUR TOOL PRESETS

How to Install and Use your New Brushes

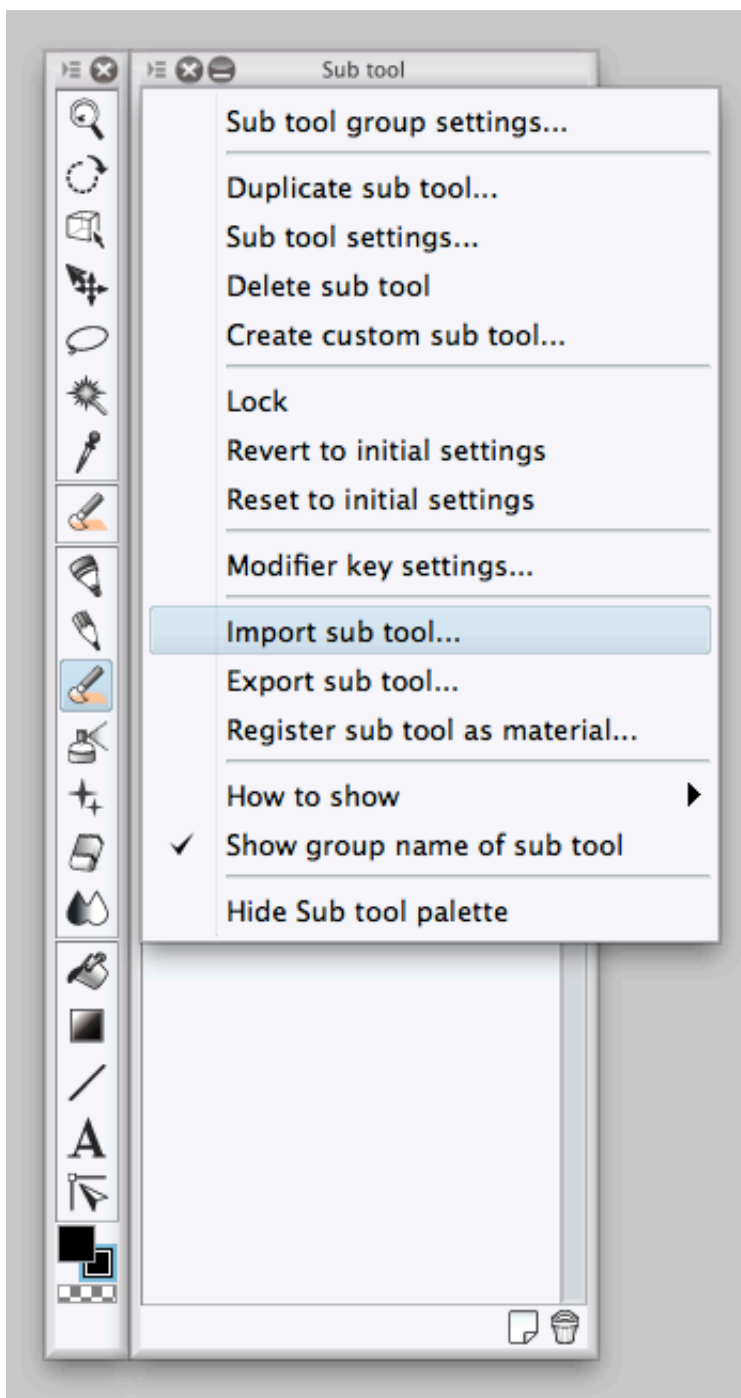
Note: These brushes are only compatible with Manga Studio 5.

Manga Studio 5 has a handy-dandy way to import and export your brush presets baked right in.

First, locate the *Sub Tool* palette on screen. If it's not visible, make sure to enable it as shown below.

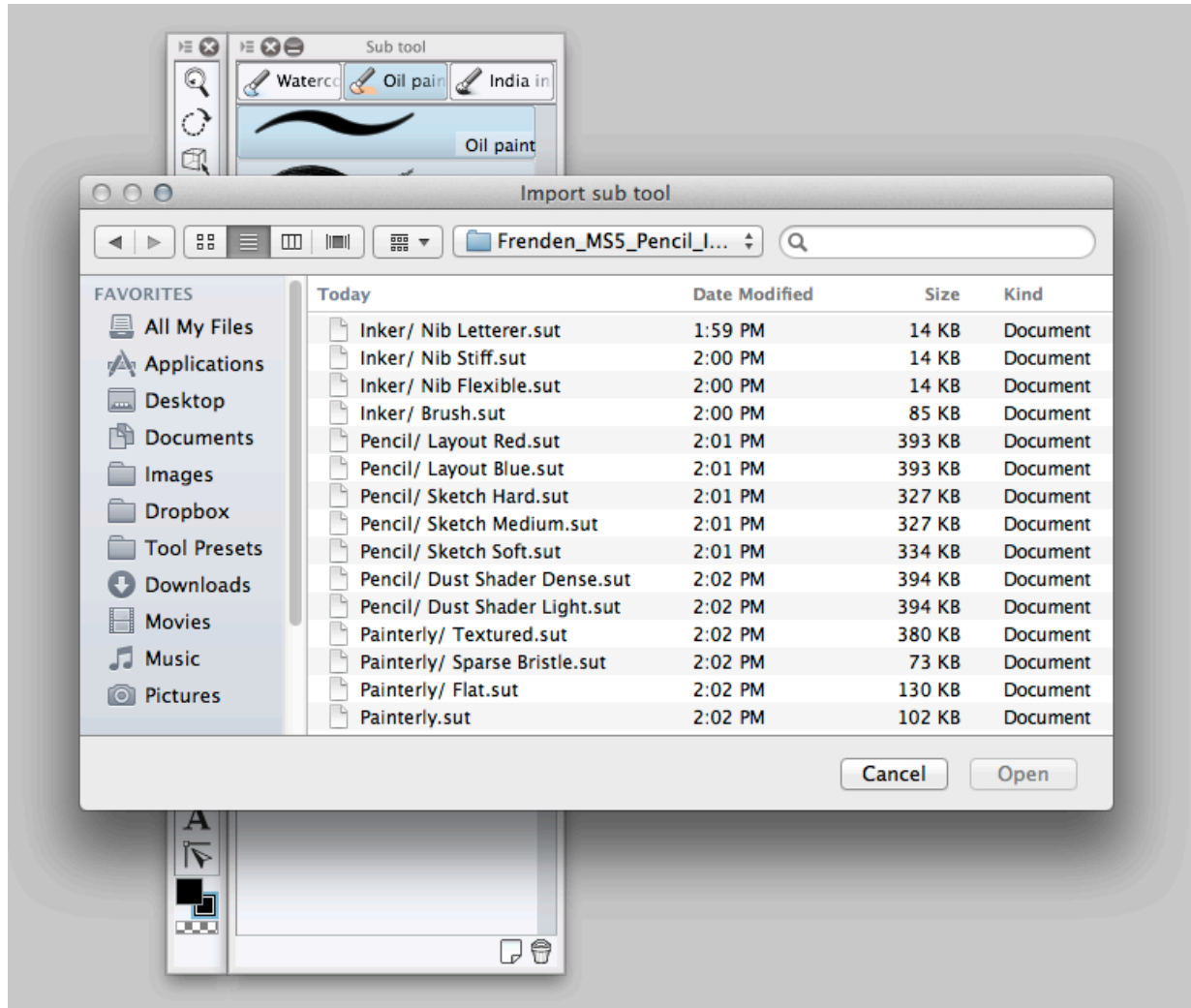


Next, with any brush tool selected, open the options icon on your sub tool palette.



Select *Import Sub Tool* and locate the download

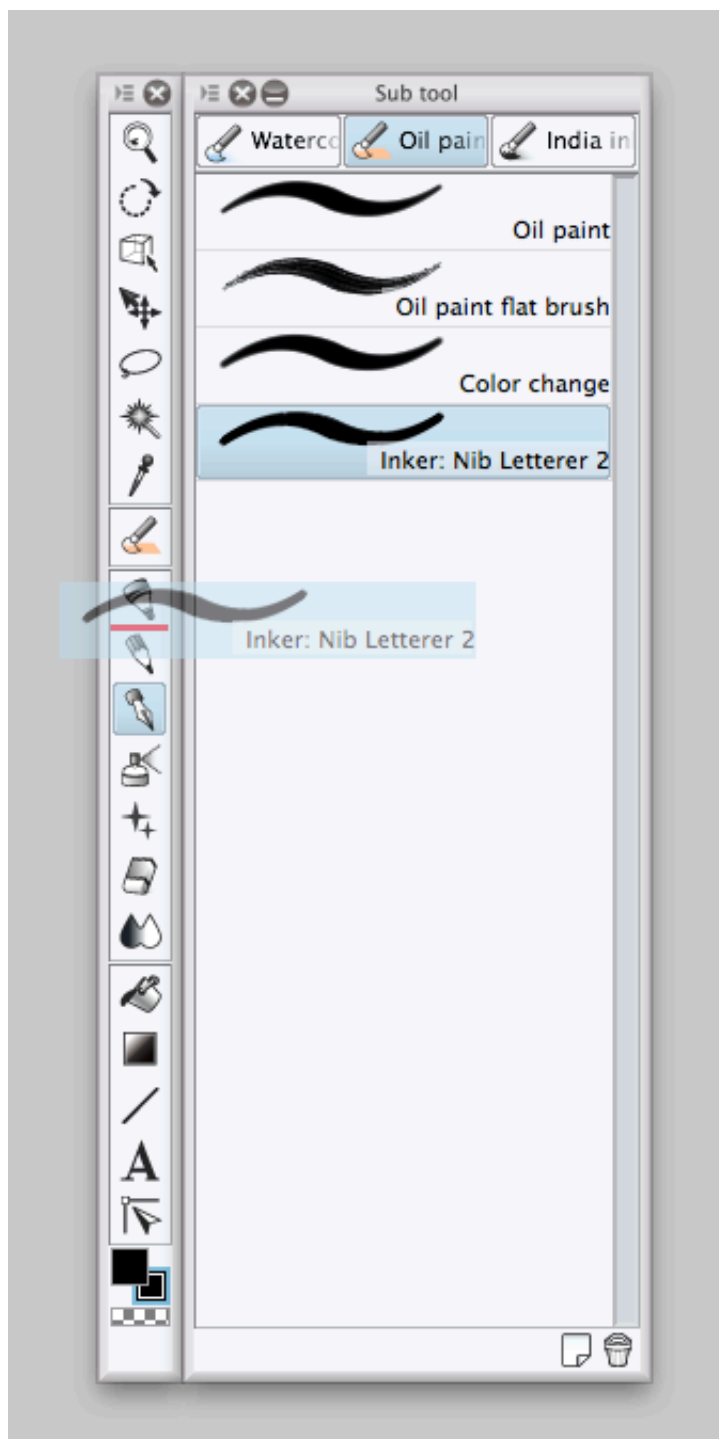
directory containing the unzipped brush files. Select a single brush and hit *Open*.



If you don't mind what subcategory your brushes are listed under, go ahead and import the rest one by one. You're done!

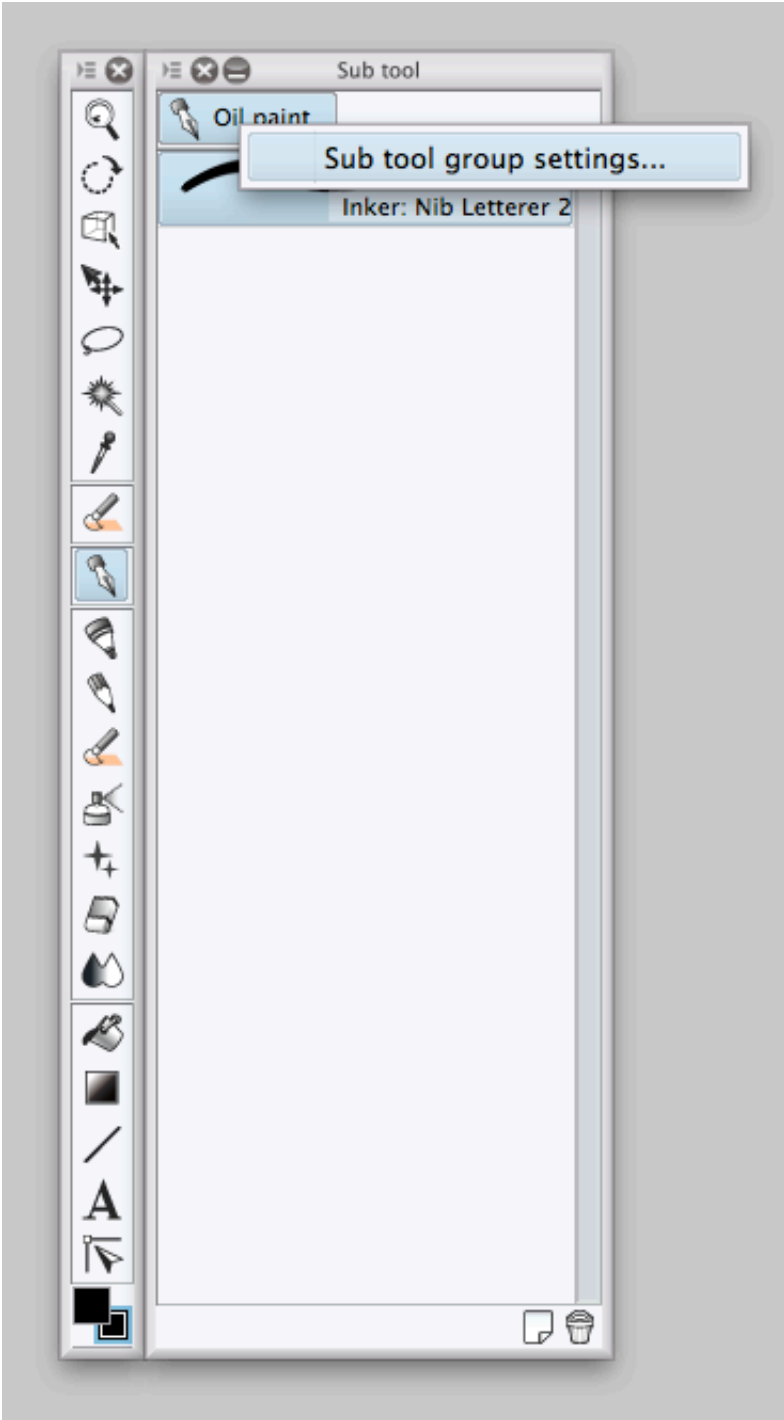
Otherwise, if you'd like them to live separately from your stock brushes, click and drag your newly imported brush preset from the sub tool palette to an empty spot

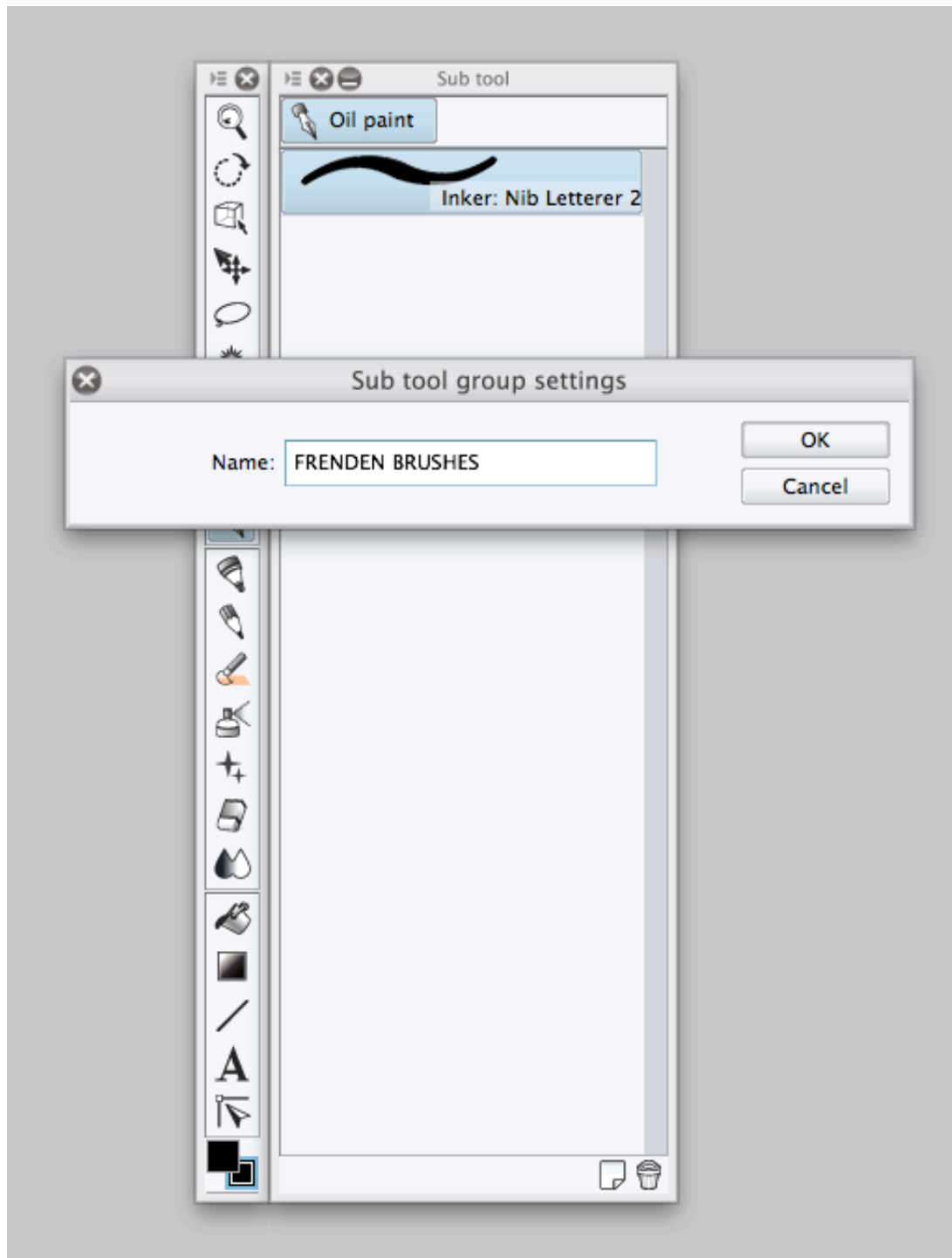
on your Tool Bar. This will create a new brush category.



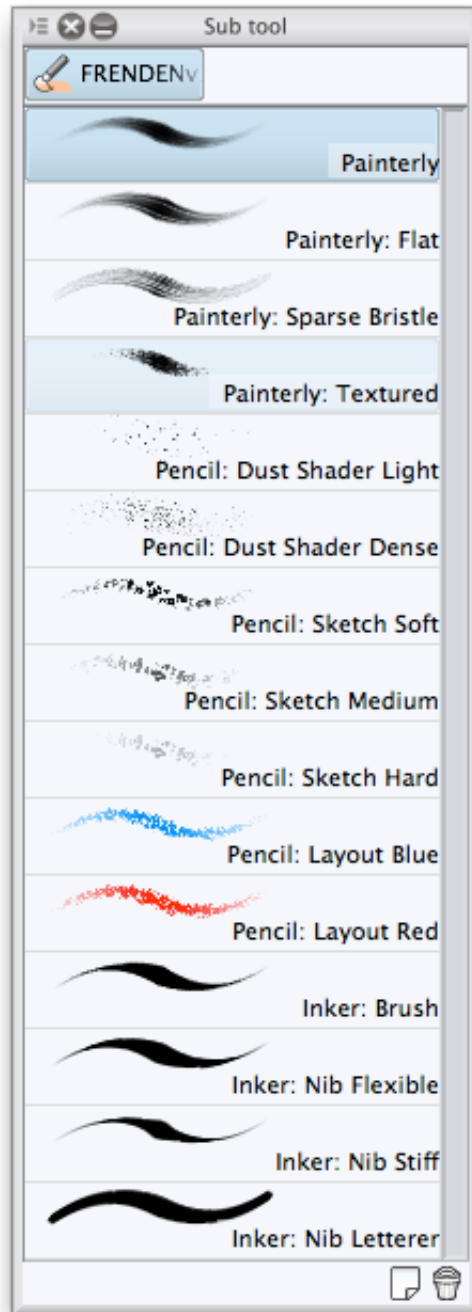
You can even right click the tab for the brushes at the top of the sub tool palette and rename them, oh, FRENDEEN

BRUSHES if you'd like.





Continue to import the tool presets one by one. Voila!
You're done!



If you have any questions or problems with the installation of these brushes, email ray+support@frenden.com.

Thanks for purchasing my tool presets. Happy drawing!